



# INFORMATION TECHNOLOGY

Part of a diversified family of solutions

[jmt.com](http://jmt.com)





---

## Services

Geographic Information Systems (GIS)

Needs Assessment & Strategic Planning

Program Management

Data Services

Software & Applications Development

Infrastructure Design & Implementation

Systems Integration

---

## About Us

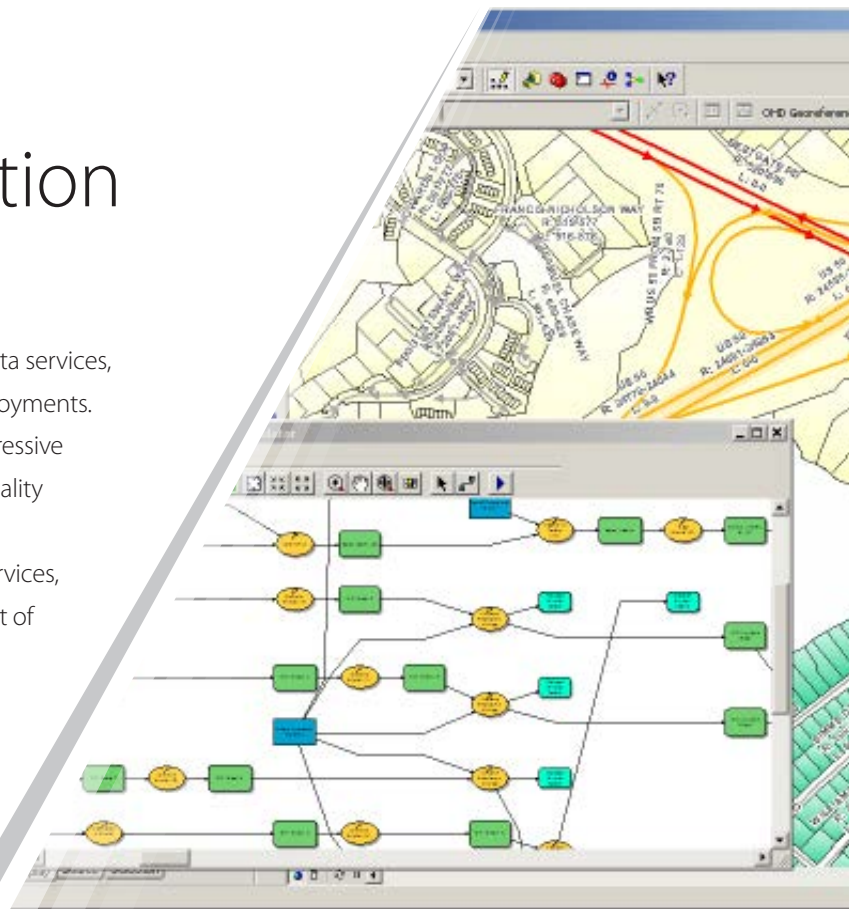
JMT Technology Group is a progressive technology services and solutions provider that assists government and private sector markets to solve complex business challenges through the use of web, desktop, and mobile technologies. We help our clients access and visualize their data spatially, making it possible to ask and answer questions that would otherwise not be possible. With unparalleled depth and breadth of resources and a proven track record, JMT Technology Group provides the right skills and solutions for our customers – in the office, in the field, and everywhere in between.





# Geographic Information Systems (GIS)

JMT Technology Group offers consulting and management, data services, applications development, and training for enterprise GIS deployments. We support a variety of GIS software platforms and other progressive technologies, providing innovative enterprise solutions and quality products to our clients. Our personnel have extensive project experience and provide project and program management services, as well as assist in system design, acquisition, and development of spatially-enabled business solutions.



---

Tailored GIS services to help navigate your most complex business challenges.

---

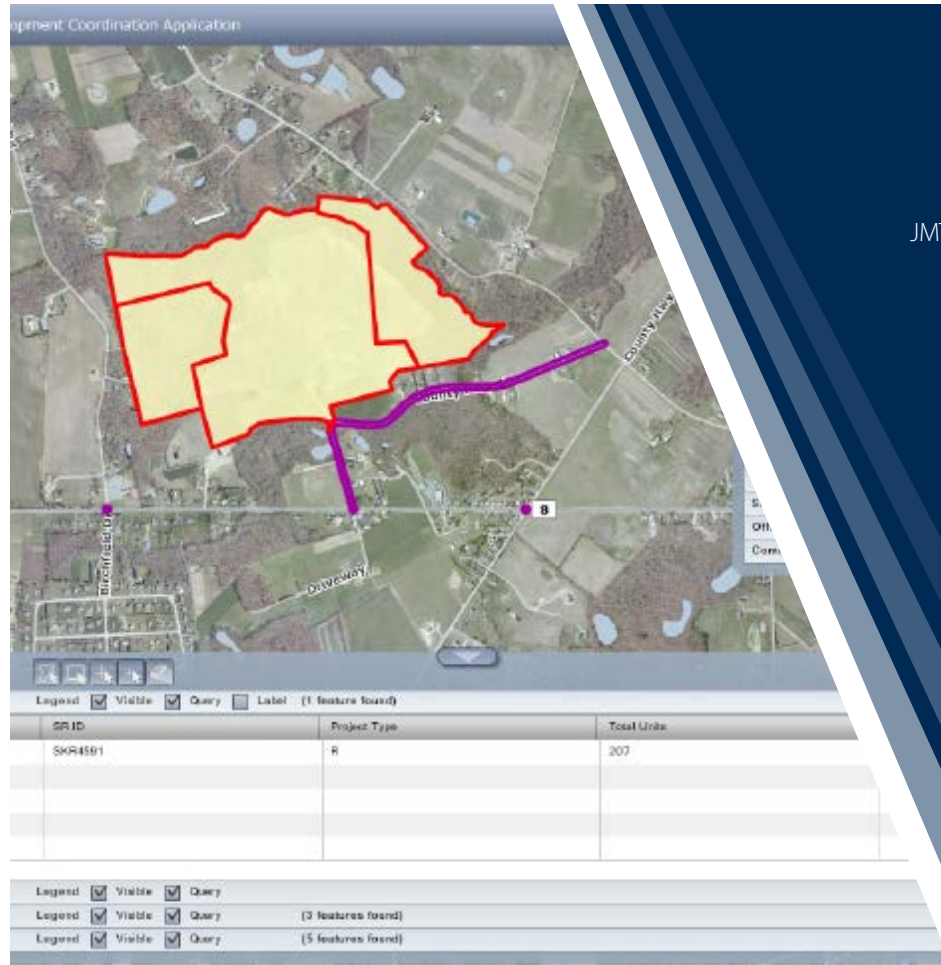
## Needs Assessments & Strategic Planning

The first critical step to successfully implement a geographic information system is to develop a needs assessment and strategic plan. Our unique needs assessment process extracts information about an organization's business processes, data, infrastructure, and applications through active stakeholder involvement. The information gathered is used to develop effective strategies that complement the vision and goals of the organization.

## Program Management

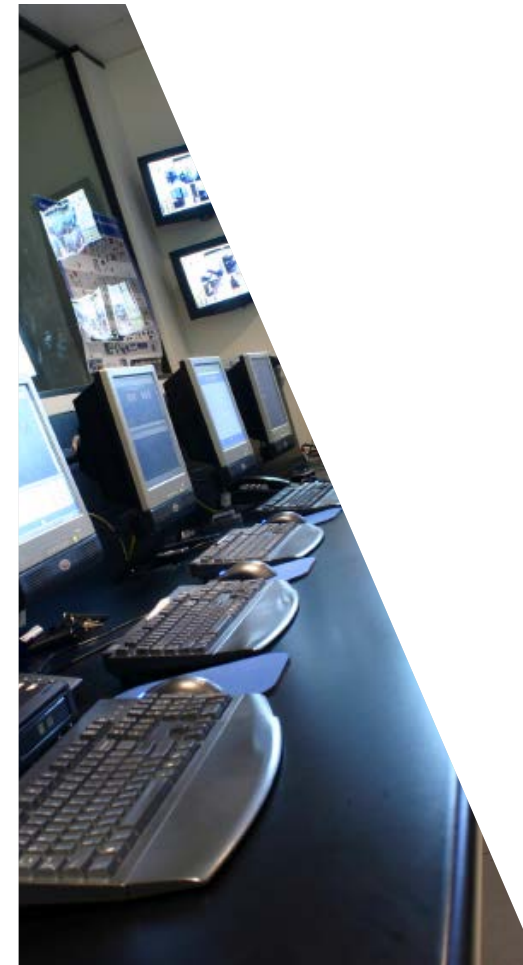
Managing multiple ongoing and interrelated projects requires a coordinated and dedicated support team that plans, prioritizes, and monitors projects to improve an organization's performance. Our program management services combine program vision, best management practices, and innovative technology to maximize organizational investments.





# Data Services

JMT Technology Group provides a broad range of data services, from initial database design through the enterprise integration of information with legacy systems. Our extensive experience collecting and developing enterprise geospatial databases for large cities, state agencies, and small organizations aids in providing current and reliable data that supports business operations and analysis.



# Infrastructure Design & Implementation

Our systems engineers and designers provide consulting services for the planning, design, acquisition, implementation, and management of IT infrastructure. Using an approach that focuses on developing a technology strategy aligned with the customer's overall business strategy allows JMT Technology Group to provide the greatest return on an organization's investment in IT infrastructure.

---

Our professional, highly trained, and experienced personnel deliver technology support services for a variety of projects.

---

# Software & Applications Development

We provide organizations with application development and programming services to produce and implement business solutions that address organizational priorities. Our experience allows us to efficiently develop decision support systems and productivity applications that support business needs, processes, and requirements. JMT Technology Group is experienced with today's most innovative development tools and methodologies to create solutions for tomorrow's workplace.



# Systems Integration

Integrating information systems and technologies into an environment of interoperability is critical to achieve the business objectives of an organization. Connecting disparate systems removes organizational silos, promoting new ways of managing, accessing, and ultimately using information. JMT Technology Group's integration services provide improved access to information through enterprise content management and collaboration portals, resulting in streamlined business operations, accelerated response times, and improved services to end users who are critical to organizational success.





**HYLAND**  
SOFTWARE

**ORACLE**

**Microsoft**  
**CERTIFIED**  
Partner

Trademarks provided under license from ESRI. ESRI, the ESRI globe logo, ArcGIS, ArcPad, and ArcView are trademarks, registered trademarks, or service marks of ESRI in the United States, the European Community, or certain other jurisdictions.



**Corporate Office**

40 Wight Ave.  
Hunt Valley, MD 21030  
P. 410.329.3100  
**jmt.com**

Offices strategically located throughout the United States

