



# MECHANICAL/ ELECTRICAL/ PLUMBING

Part of a diversified family of solutions

[jmt.com](http://jmt.com)





---

# Services

Mechanical/Plumbing/Fire Protection  
Electrical/Telecommunications

# Markets

Buildings & Facilities  
Education  
Government  
Water, Wastewater & Utilities

---

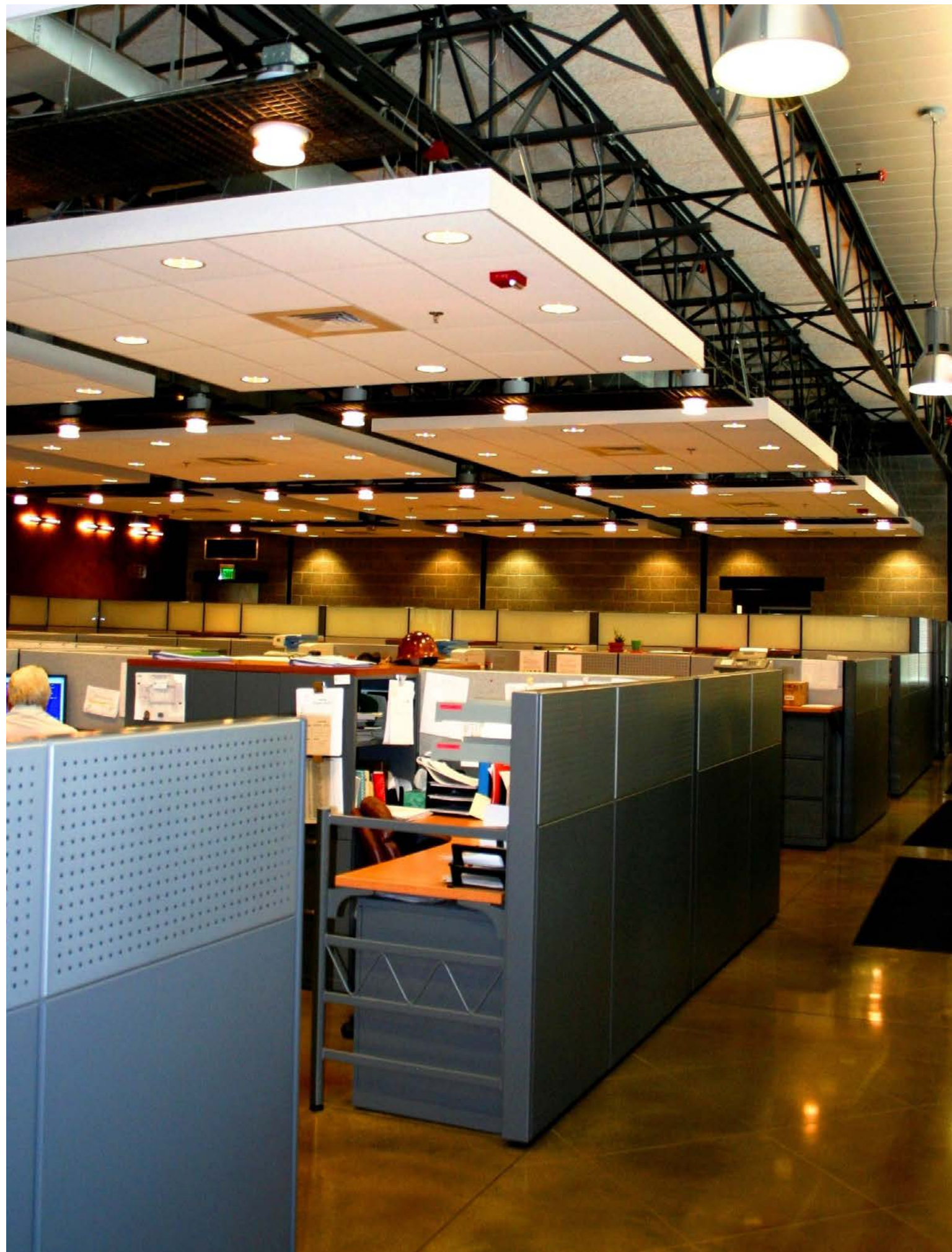
# About Us

JMT is a multidisciplinary firm providing a full array of consulting services to clients throughout the United States. Our client base consists of federal, state, and local government agencies as well as private institutions, commercial and industrial concerns.

The mechanical and electrical staff assumes a proactive stance to anticipate potential problems and develops solutions before the project is adversely impacted, allowing the owner to maintain schedule, cost, and quality.

Our staff of highly-trained, experienced personnel delivers innovative solutions for commercial, educational, industrial buildings, and transportation facilities. Our engineers are well versed in the retrofit of existing buildings, as well as the design of new construction.





# Mechanical/Plumbing/ Fire Protection

- HVAC Design
- Plumbing Design
- Fire Protection & Life Safety
- Industrial Systems
- Feasibility Studies
- Geothermal Systems
- Commissioning
- Energy Audits
- Life Cycle Evaluations
- Mechanical Measurement & Verification
- Greenhouse Gas Reduction
- Retro-Commissioning
- Energy Efficient Designs
- Site Verification
- Controls Design
- Code Reviews
- Indoor Air Quality

JMT's commissioning and engineering staff are actively involved with the owner to create long-term operations featuring energy efficiency opportunities.



# Electrical/Telecommunications

Electrical Power & Distribution Design

Daylighting Controls Design

Lighting & Lighting Controls

Electrical Measurement & Verification

Telecommunications & Computer Networking

Retro-Commissioning

Energy Efficient Design

Fire Alarm & Life Safety

Security Systems

Wireless Communication Networks

Power Generation &

Emergency Power CATV, CCTV

Commissioning

Feasibility Studies

Roadway Lighting Design

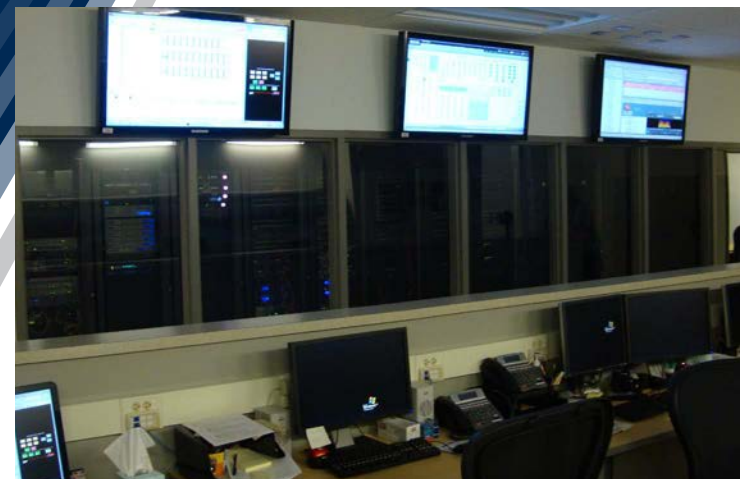
Code Reviews

Photovoltaic Design

Lightning Protection

Systems

Grounding Systems



## Education

Primary

Classroom Spaces

Science Classrooms & Laboratories

Educational Phasing & Scheduling

Higher Education

Classroom Technology

Administration Spaces

Field & Stadium Lighting

Computer Facilities

Auditoriums

Secondary

Indoor Pools & Gymnasiums

Building Utility Distribution Systems

Educational Indoor Air Quality

Building Security & Communication

TIMS Power & Distribution

Data Centers

## Government

Police, Fire & Safety

Visitor & Welcome Centers

Indoor/Outdoor Firing Ranges

Data Centers

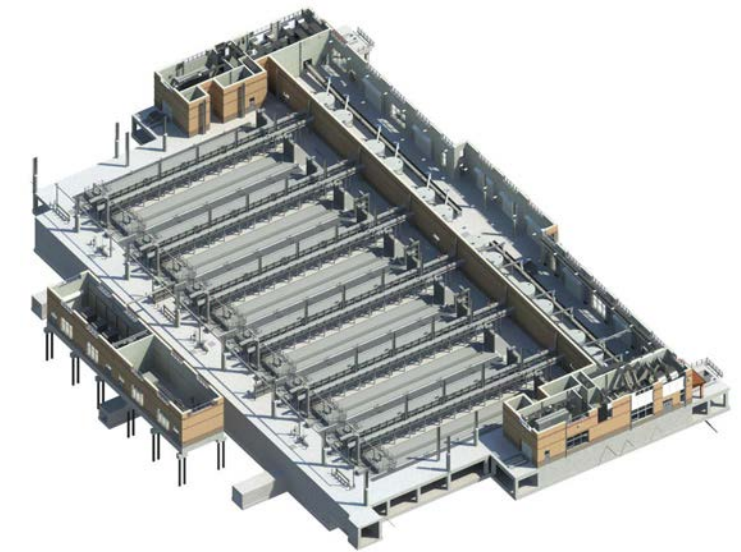
Underground Utilities

Libraries

Maintenance Shops

Municipal/State Office Buildings

Recreation & Parks Facilities



## Water, Wastewater & Utilities

Wastewater Plants

Pump Stations

Power Reliability

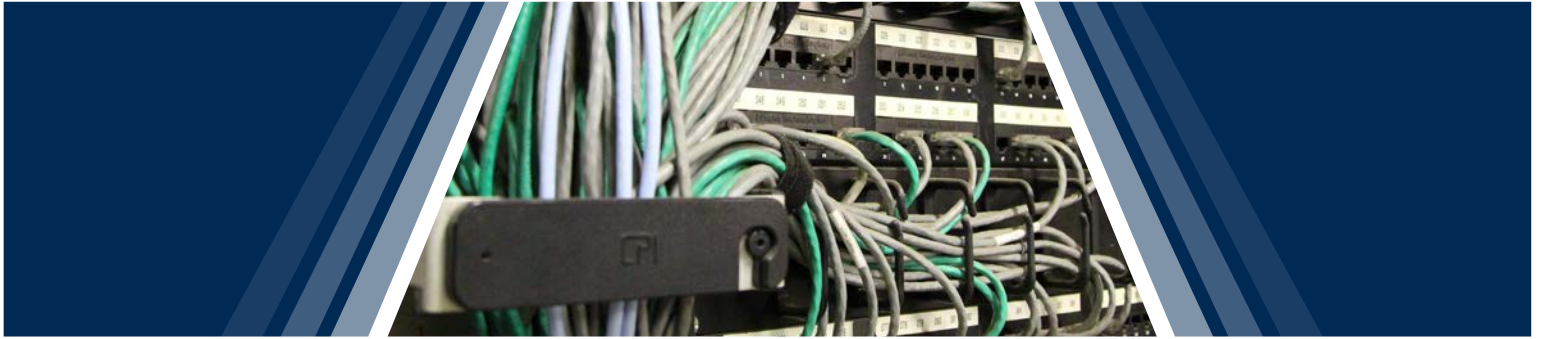
Standby/Emergency Power Pumping Systems

Process Controls/SCADA

Code Compliant Ventilation

Classified Electrical Systems

Cogeneration



**Corporate Office**

40 Wight Ave.  
Hunt Valley, MD 21030  
P. 410.329.3100

**[jmt.com](http://jmt.com)**

Offices strategically located throughout the United States

